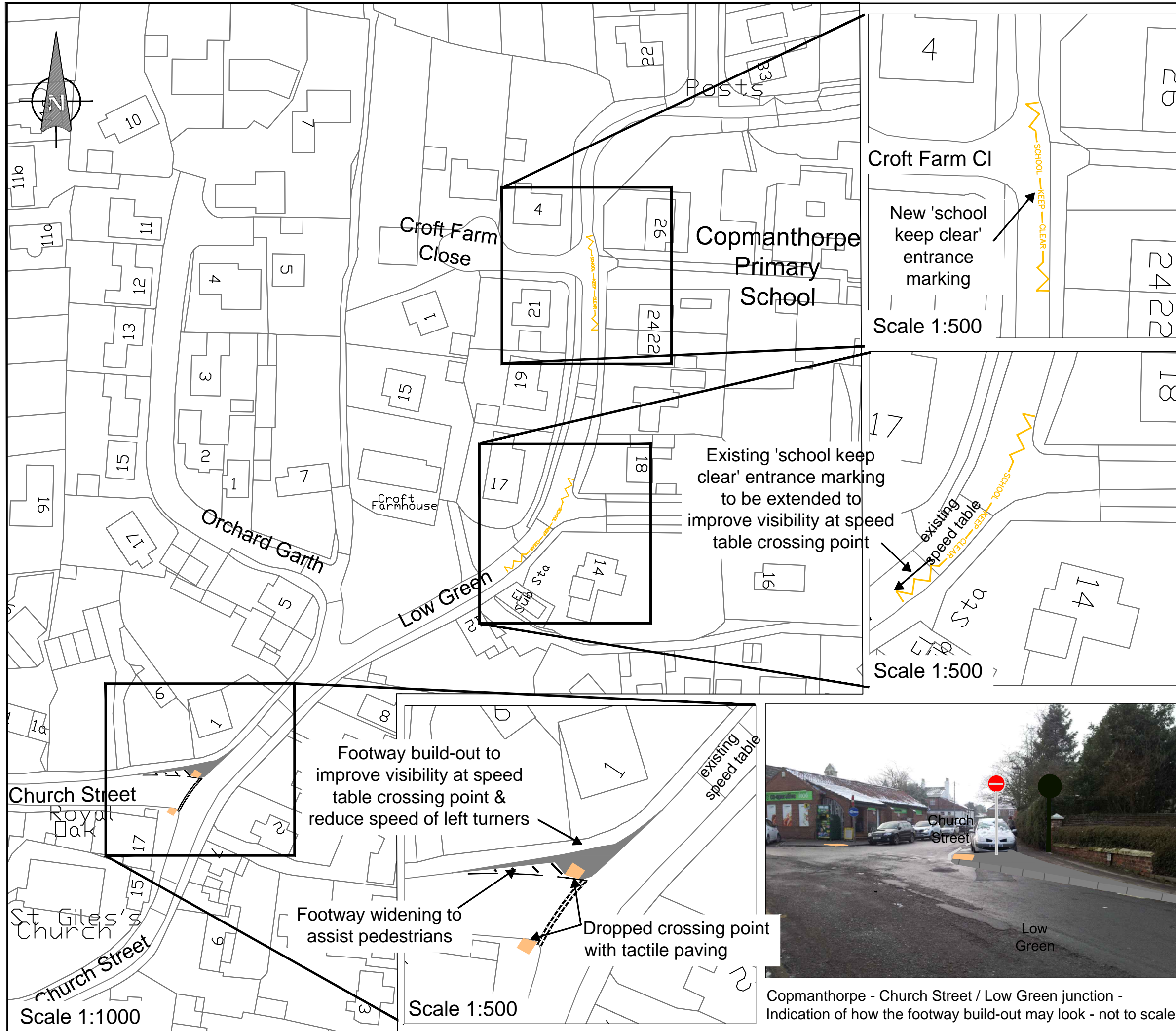


NOTES:



Copmanthorpe - Church Street / Low Green junction - Indication of how the footway build-out may look - not to scale

© CROWN COPYRIGHT. City of York Council OS Licence No. 1000 20818

APPROVAL

Revision	By	Checked	Approved	Date	Description



Sustainable Transport Service (Transport Projects)
 West Offices, Station Rise, York, YO1 6GA
 Tel: 01904 553550 Fax: 01904 553560
 www.york.gov.uk

Project
 COPMANTHORPE PRIMARY SCHOOL
 LOW GREEN-HIGHWAY IMPROVEMENTS

Drawing
 PROPOSED FOOTWAY BUILD-OUT
 & SCHOOL KEEP CLEAR MARKINGS

Drawn by LR Date: 21/06/2013
 Checked by Date:
 Authorised by Date:

Drawing No. TP/130021/APPROVAL/01 Revision

Drawing Scale: AS SHOWN A3

CAD Filename: Plot Scale: 1:1